

SINGLE HELIX (SH) LEAD
EX: (312300SH[L][D1]X[T]G)

DOUBLE HELIX (DH) LEAD
EX: (312300DH[L][D1,D2]X[T]G)

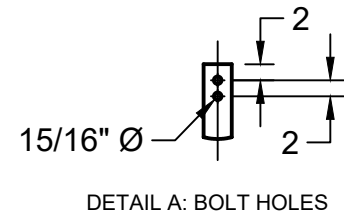
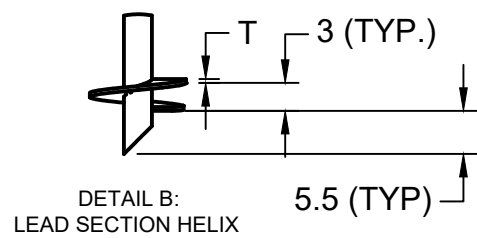
TRIPLE HELIX (TH) LEAD
EX: (312300TH[L][D1,D2,D3]X[T]G)

EXTENSION
EX: (312290EXT[L]G)

SINGLE HELIX (SH) EXTENSION
EX: (312300FESH[L][D1]X[T]G)

DOUBLE HELIX (DH) EXTENSION
EX: (312300FEDH[L][D1,D2]X[T]G)

TYPICAL PILE ASSEMBLY



3.5" x 0.300" W.T HELICAL LEADS & EXTENSIONS



PROPRIETARY AND CONFIDENTIAL
THE INFORMATION CONTAINED IN THIS DRAWING IS THE EXCLUSIVE PROPERTY OF NORTEK HELICAL PILES. ANY REPRODUCTION, PUBLICATION, OR DISTRIBUTION IN PART OR IN WHOLE WITHOUT THE WRITTEN PERMISSION OF NORTEK HELICAL PILES IS PROHIBITED.

APPROVED	K.D	2024-02-09	NORTEK HELICAL PILES 1098 INDUSTRIAL RD AYR, ON N0B 1E0 519-623-3858 WWW.NORTEKHELICALPILES.CA
CHECKED	C.D	2024-02-08	
DRAWN	K.D	2024-02-01	
DWG NO	1		

SHEET 1 OF 1
UNITS IN INCHES U.N.O
REV 01

MAXIMUM TORQUE NOT TO EXCEED 17,200 FT-LBS

ULTIMATE CAPACITY OF 120.4 KIPS BASED ON A CAPACITY TO TORQUE RATIO OF 7⁻¹

NOTES:

- PILE SHAFT TO MEET OR EXCEED REQUIREMENTS OF ASTM A500 80 KSI
- PALTE STEEL TO MEET OR EXCEED REQUIREMENTS OF CSA G40.21-13 GRADES 44W/50W AND ASTM A36-19
- ALL HELICES ARE FORMED BY PRESS DIE
- HELIX SPACING IS EQUAL TO (3) TIMES THE DIAMETER OF THE LOWER HELIX
- STANDARD HELIX DIAMETERS INCLUDE 12", 14", & 16". 1/2" THICKNESS.
- ALL WELDING TO BE PERFORMED BY CERTIFIED WELDER IN ACCORDANCE WITH CWB W59-18
- HOT DIP GALVANIZING AS PER CAN/CSA G 164 or ASTM 123
- (2) 3/4" DIAMETER X 5 1/2" LONG HEAVY HEX BOLTS AND 3/4" HEAVY HEX NUT

NORTEK SKU # ABBREVIATIONS

- 312 = SHAFT DIAMETER
- 250 = SHAFT WALL THICKNESS
- [L]= SHAFT LENGTH IN FT
- T = HELIX THICKNESS
- EXT = EXTENSION
- FE = FLIGHTED EXTENSION
- [D] = DIAMETER OF HELIX IN INCHES
- SH = SINGLE HELIX
- DH = DOUBLE HELIX
- TH= TRIPLE HELIX
- G = GALVANIZED