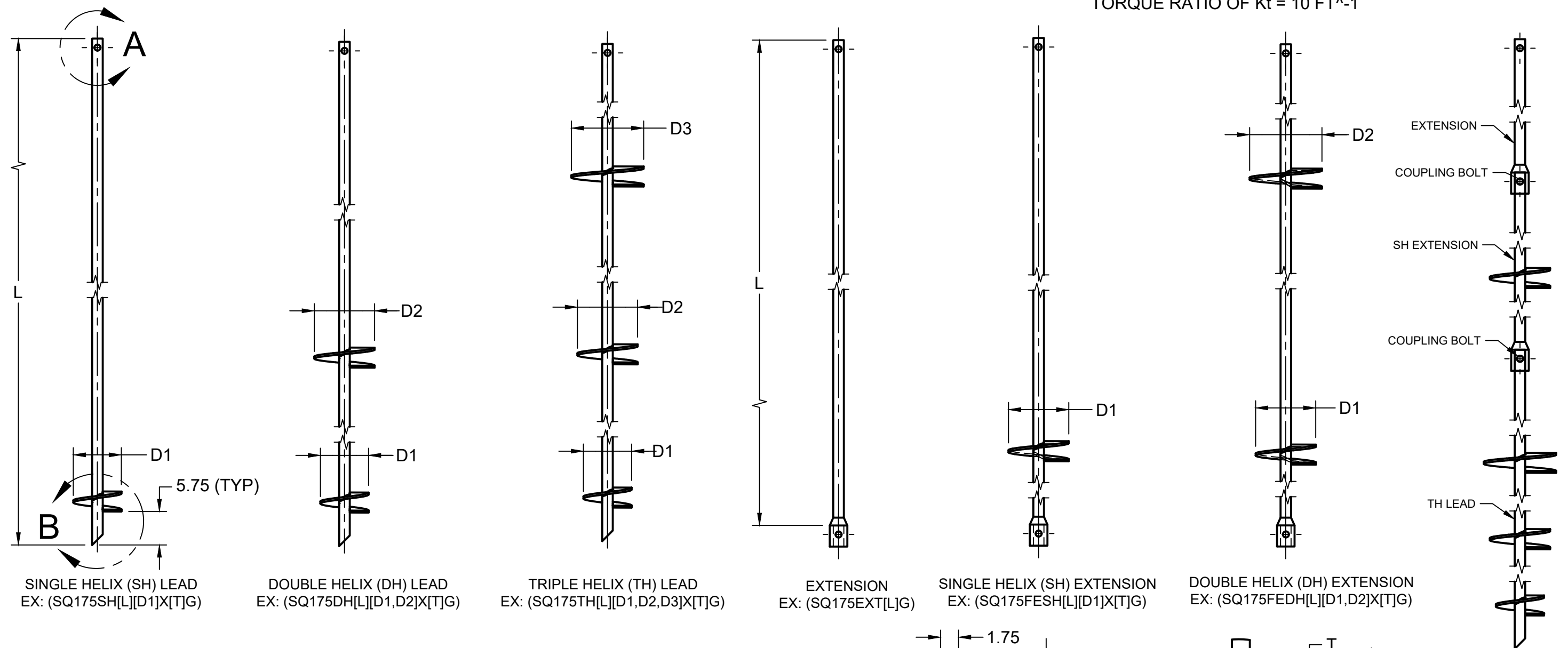


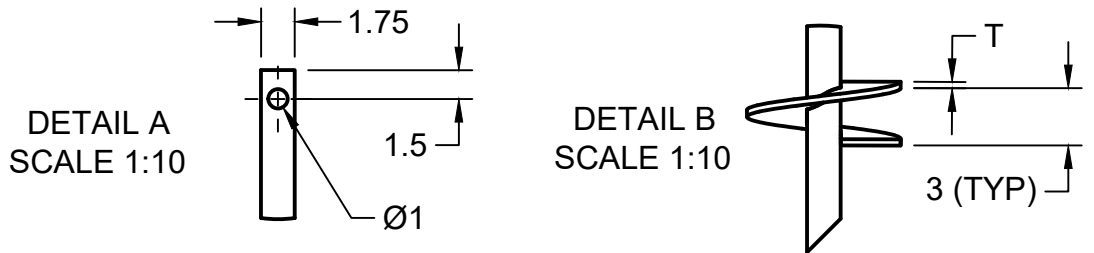
MAXIMUM TORQUE NOT TO EXCEED 11,000 FT-LBS

ULTIMATE CAPACITY OF 110 KIPS BASED ON CAPACITY TO TORQUE RATIO OF $K_t = 10 \text{ FT}^{-1}$



- NOTES:**
- PILE SHAFT TO MEET OR EXCEED 90 KSI
 - PLATE STEEL TO MEET OR EXCEED REQUIREMENTS OF A572 GRADE 50
 - ALL HELICES ARE FORMED BY PRESS DIE
 - HELIX SPACING IS EQUAL TO (3) TIMES THE DIAMETER OF THE LOWER HELIX
 - STANDARD HELIX DIAMETERS INCLUDE 8", 10", 12", & 14". 3/8" OR 1/2" THICKNESS.
 - ALL WELDING TO BE PERFORMED BY CERTIFIED WELDER IN ACCORDANCE WITH CWB W59-18
 - BARE STEEL IS STANDARD. HOT DIP GALVANIZING AS PER CAN/CSA G 164 or ASTM 123
 - (2) 7/8" DIAMETER X 3 3/4" LONG HEAVY HEX BOLTS AND (1) 7/8" HEAVY HEX NUT

NORTEK PART# ABBREVIATIONS
SQ = ROUND CORNER SQUARE SHAFT
175 = SHAFT DIAMETER
L = SHAFT LENGTH IN FT
EXT = EXTENSION
FE = FLIGHTED EXTENSION
D = DIAMETER OF HELIX (EX. 12" = 12)
SH = SINGLE HELIX
DH = DOUBLE HELIX
TH = TRIPLE HELIX
X = SEPARATES HELIX DIAMETERS AND THICKNESSES
[T] = HELIX THICKNESS
G = GALVANIZED



1 3/4" ROUND CORNER SQUARE SHAFT HELICAL LEADS & EXTENSIONS					
			<p>PROPRIETARY AND CONFIDENTIAL</p> <p>THE INFORMATION CONTAINED IN THIS DRAWING IS THE SOLE PROPERTY OF NORTEK HELICAL PILES. ANY REPRODUCTION IN PART OR AS A WHOLE WITHOUT WRITTEN PERMISSION OF NORTEK HELICAL PILES IS PROHIBITED.</p> <p>SHEET 1 OF 1</p> <p>UNITS IN INCHES U.N.O</p> <p>REV 01</p>		
APPROVED	K.D	2025-06-01			NORTEK HELICAL PILES 1098 INDUSTRIAL RD AYR, ON N0B 1E0 519-623-3858 WWW.NORTEKHELICALPILES.CA
CHECKED	C.D	2024-01-20			
DRAWN	K.D	2024-01-04			
DWG NO	1				