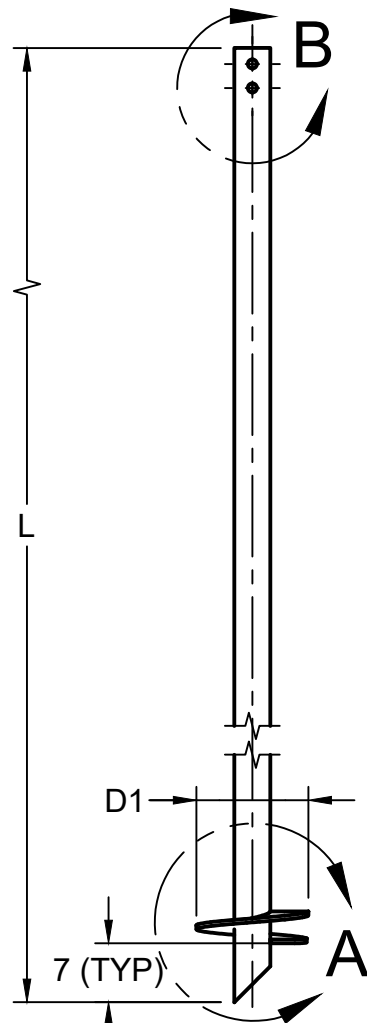
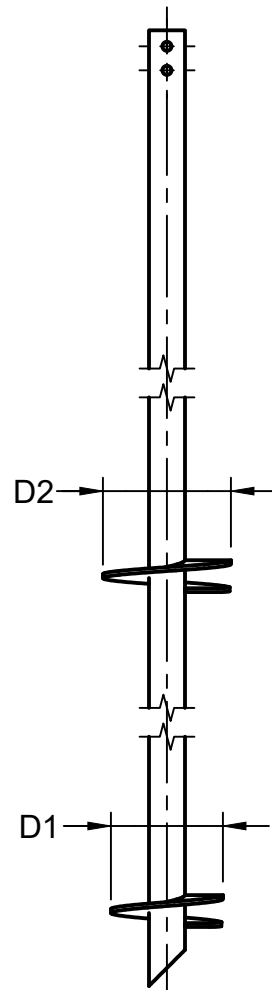


MAXIMUM TORQUE NOT TO EXCEED 26,500 FT-LBS

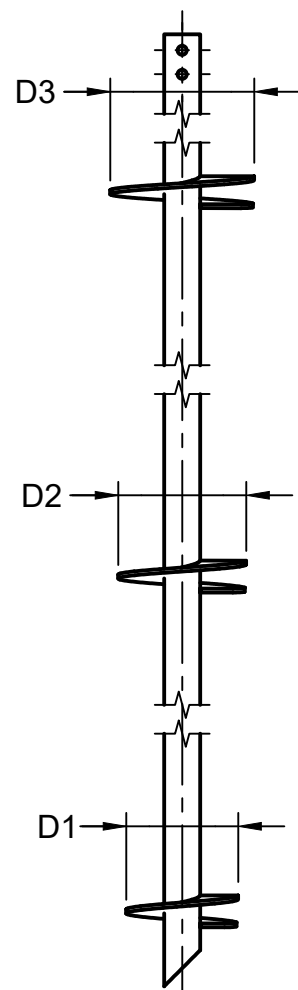
ULTIMATE CAPACITY OF 159 KIPS BASED ON CAPACITY TO TORQUE RATIO OF $K_t = 6\text{FT}^{-1}$



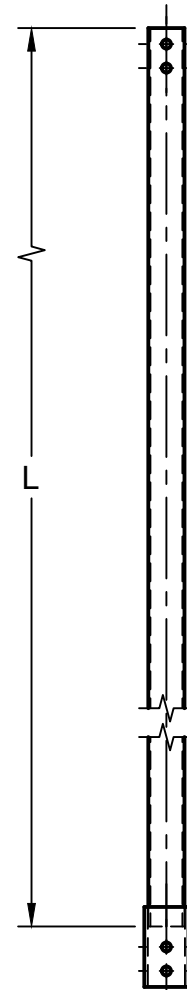
SINGLE HELIX (SH) LEAD
EX: (412290SH[L][D1]X[T]G)



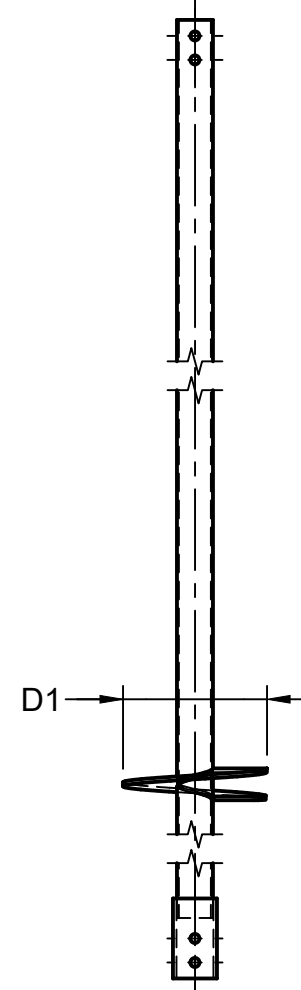
DOUBLE HELIX (DH) LEAD
EX: (412290DH[L][D1,D2]X[T]G)



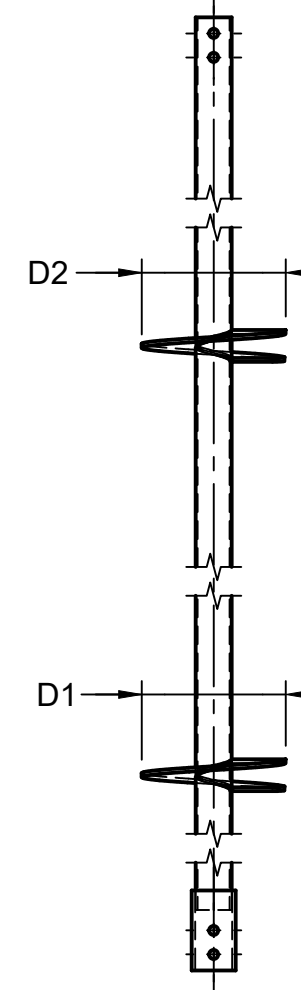
TRIPLE HELIX (TH) LEAD
EX: (412290TH[L][D1,D2,D3]X[T]G)



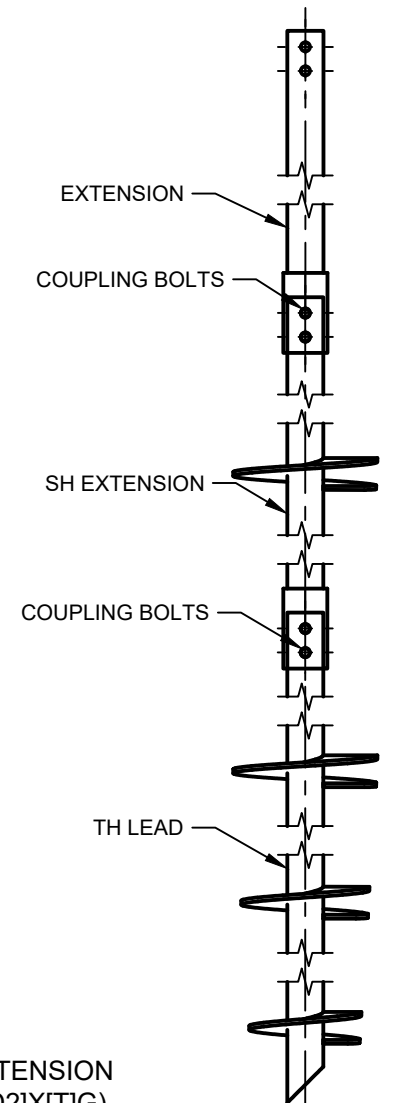
EXTENSION
EX: (412290EXT[L]G)



SINGLE HELIX (SH) EXTENSION
EX: (412290FESH[L][D1]X[T]G)



DOUBLE HELIX (SH) EXTENSION
EX: (412290FEDH[L][D1,D2]X[T]G)



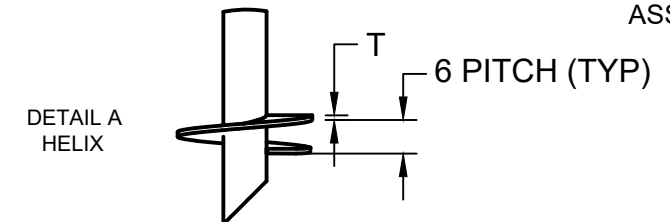
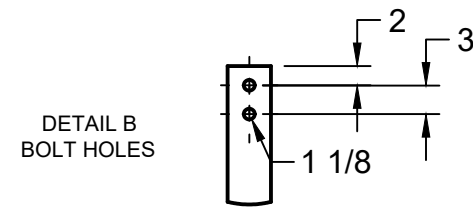
TYPICAL PILE ASSEMBLY

NOTES:

- PILE SHAFT TO MEET OR EXCEED 80 KSI
- PLATE STEEL TO MEET OR EXCEED REQUIREMENTS OF CSA G40.21-13 GRADES 44W/50W AND ASTM A36-19
- ALL HELICES ARE FORMED BY PRESS DIE
- HELIX SPACING IS EQUAL TO (3) TIMES THE DIAMETER OF THE LOWER HELIX
- STANDARD HELIX DIAMETERS INCLUDE 14", 16", 18", & 20". 1/2" THICKNESS.
- ALL WELDING TO BE PERFORMED BY CERTIFIED WELDER IN ACCORDANCE WITH CWB W59-18
- HOT DIP GALVANIZING AS PER CAN/CSA G 164 or ASTM 123
- (2) 1" DIAMETER X 7" LONG HEAVY HEX BOLTS AND 1" HEAVY HEX NUT

NORTEK SKU # ABBREVIATIONS

412 = SHAFT DIAMETER
 290 = SHAFT WALL THICKNESS
 L = SHAFT LENGTH IN FT
 EXT = EXTENSION
 FE = FLIGHTED EXTENSION
 D = DIAMETER OF HELIX (EX. 12" = 12)
 SH = SINGLE HELIX
 DH = DOUBLE HELIX
 TH = TRIPLE HELIX
 X = SEPARATES HELIX DIAMETERS AND THICKNESSES
 [T] = HELIX THICKNESS
 G = GALVANIZED



4.5" x 0.290" W.T HELICAL LEADS & EXTENSIONS			
			PROPRIETARY AND CONFIDENTIAL THE INFORMATION CONTAINED IN THIS DRAWING IS THE SOLE PROPERTY OF NORTEK HELICAL PILES. ANY REPRODUCTION IN PART OR AS A WHOLE WITHOUT WRITTEN PERMISSION OF NORTEK HELICAL PILES IS PROHIBITED.
APPROVED	K.D	2024-02-02	
CHECKED	C.D	2024-02-01	NORTEK HELICAL PILES 1098 INDUSTRIAL RD AYR, ON N0B 1E0 519-623-3858 WWW.NORTEKHELICALPILES.CA
DRAWN	K.D	2024-01-15	
DWG NO	1		
			SHEET 1 OF 1
			UNITS IN INCHES U.N.O
			REV 01