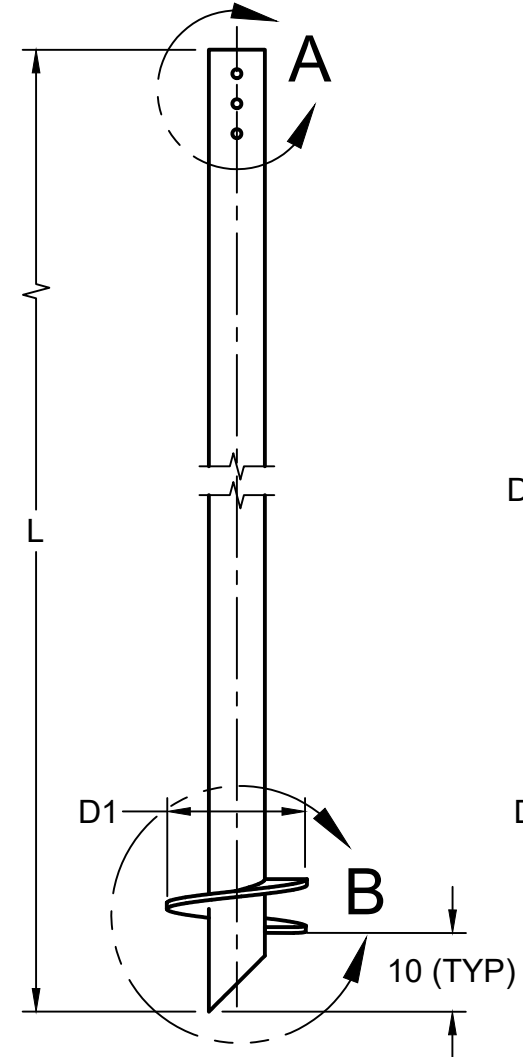
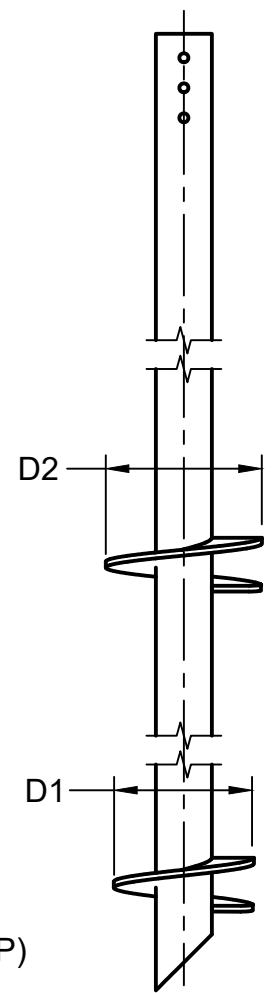


MAXIMUM TORQUE NOT TO EXCEED 120,000 FT-LBS

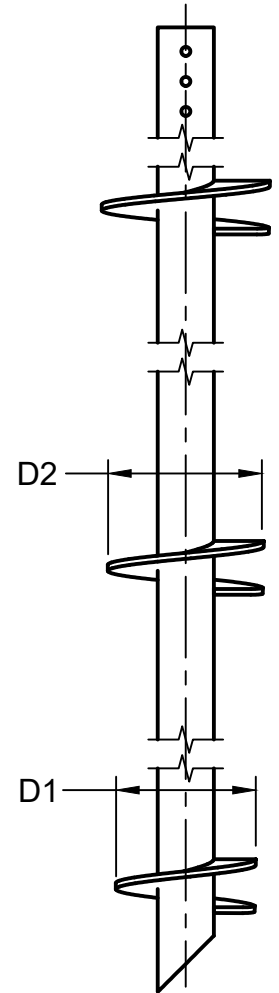
ULTIMATE CAPACITY CALCULATED BASED ON SITE
SPECIFIC GEOTECHNICAL REPORTS



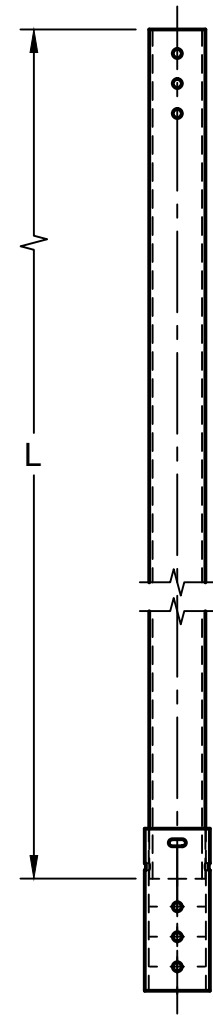
SINGLE HELIX (SH) LEAD
EX: (700408SH[L][D1]X[T]G)



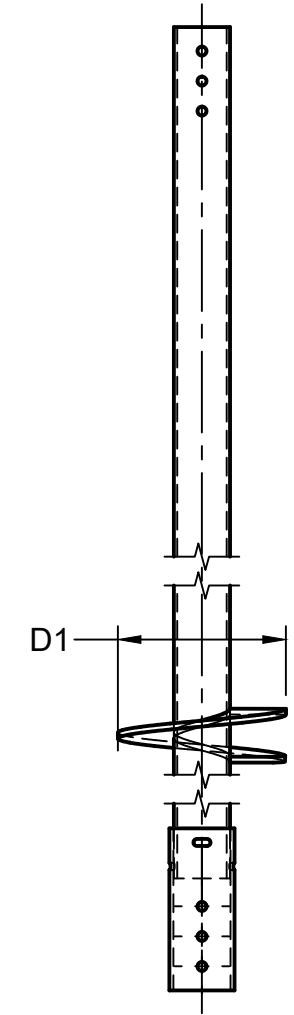
DOUBLE HELIX (DH) LEAD
EX: (700408DH[L][D1,D2]X[T]G)



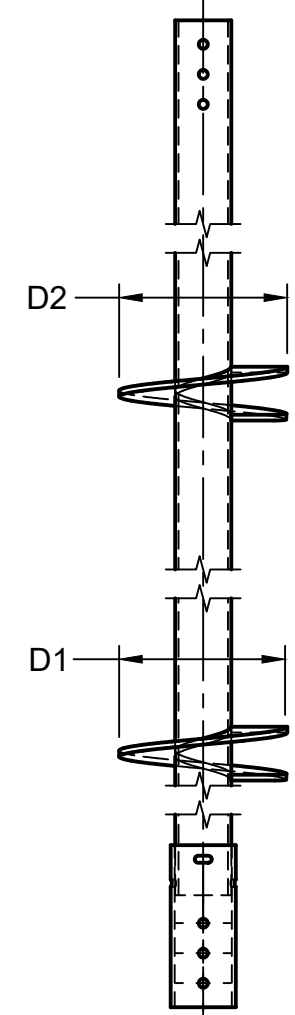
TRIPLE HELIX (TH) LEAD
EX: (700408TH[L][D1,D2,D3]X[T]G)



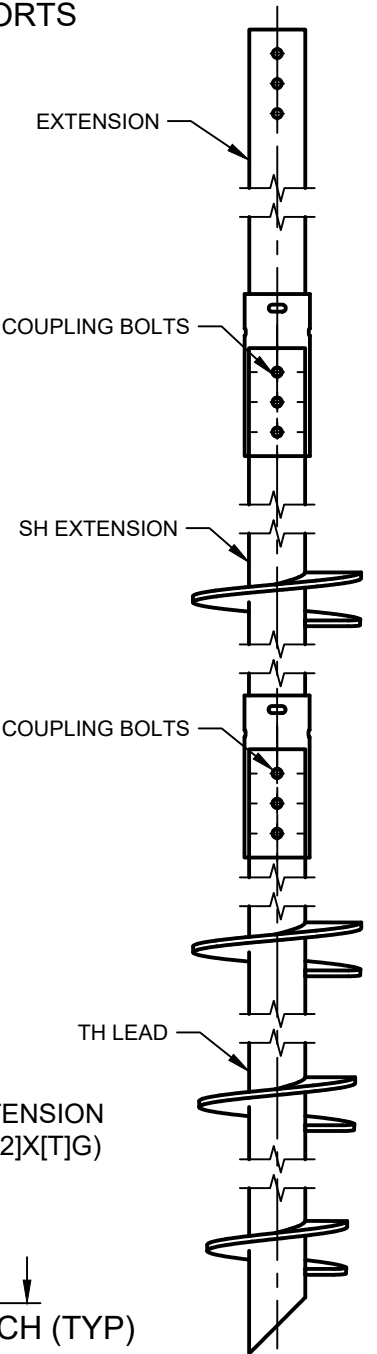
EXTENSION
EX: (700408EXT[L]G)



SINGLE HELIX (SH) EXTENSION
EX: (700408FESH[L][D1]X[T]G)

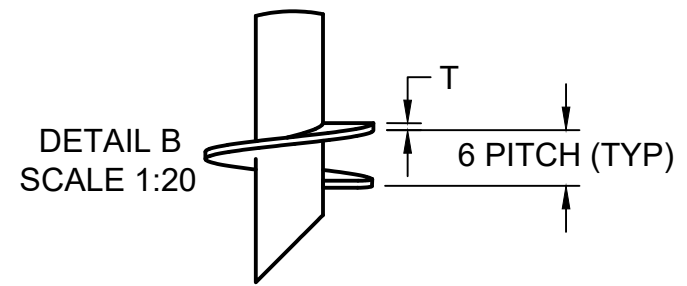
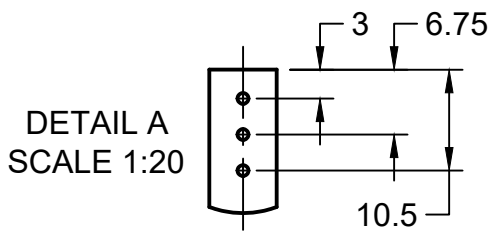


DOUBLE HELIX (DH) EXTENSION
EX: (700408FEDH[L][D1,D2]X[T]G)



- NOTES:**
- PILE SHAFT TO MEET OR EXCEED 80 KSI
 - PLATE STEEL TO MEET OR EXCEED REQUIREMENTS OF A572 GRADE 50
 - ALL HELICES ARE FORMED BY PRESS DIE
 - HELIX SPACING IS EQUAL TO (3) TIMES THE DIAMETER OF THE LOWER HELIX
 - STANDARD HELIX DIAMETERS INCLUDE 16", 18", 20", 22", & 24". 3/4" THICKNESS.
 - ALL WELDING TO BE PERFORMED BY CERTIFIED WELDER IN ACCORDANCE WITH CWB W59-18
 - BARE STEEL IS STANDARD. HOT DIP GALVANIZING AS PER CAN/CSA G 164 or ASTM 123
 - (2) 1 1/2" DIAMETER X 12" LONG HEAVY HEX BOLTS AND 1 1/2" HEAVY HEX NUT

NORTEK PART# ABBREVIATIONS
700 = SHAFT DIAMETER
408 = SHAFT WALL THICKNESS
L= SHAFT LENGTH IN FT
EXT = EXTENSION
FE = FLIGHTED EXTENSION
D = DIAMETER OF HELIX (EX. 12" = 12)
SH = SINGLE HELIX
DH = DOUBLE HELIX
TH= TRIPLE HELIX
X = SEPARATES HELIX DIAMETERS AND THICKNESSES
[T] = HELIX THICKNESS
G = GALVANIZED



7.00" x 0.408" W.T HELICAL LEADS & EXTENSIONS				
			PROPRIETARY AND CONFIDENTIAL THE INFORMATION CONTAINED IN THIS DRAWING IS THE SOLE PROPERTY OF NORTEK HELICAL PILES. ANY REPRODUCTION IN PART OR AS A WHOLE WITHOUT WRITTEN PERMISSION OF NORTEK HELICAL PILES IS PROHIBITED.	
APPROVED	K.D	2024-02-06	NORTEK HELICAL PILES 1098 INDUSTRIAL RD AYR, ON N0B 1E0 519-623-3858 WWW.NORTEKHELICALPILES.CA	SHEET 1 OF 1
CHECKED	C.D	2024-01-20		UNITS IN INCHES U.N.O
DRAWN	K.D	2024-01-04		REV 01
DWG NO	1			