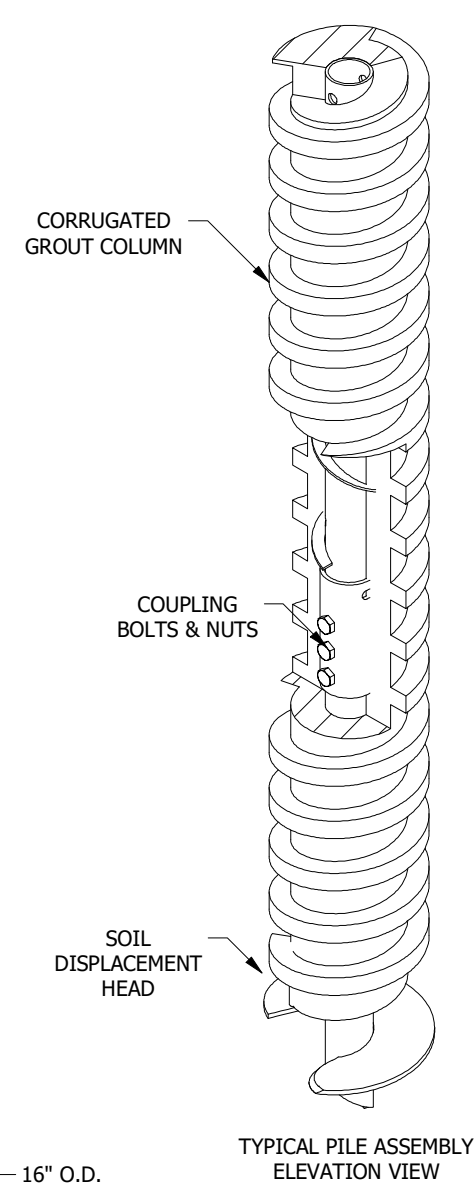
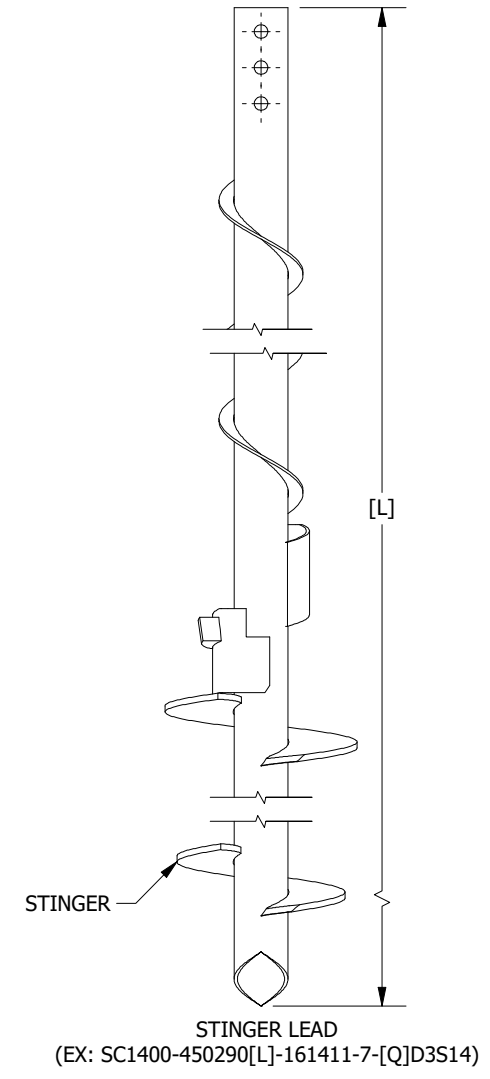
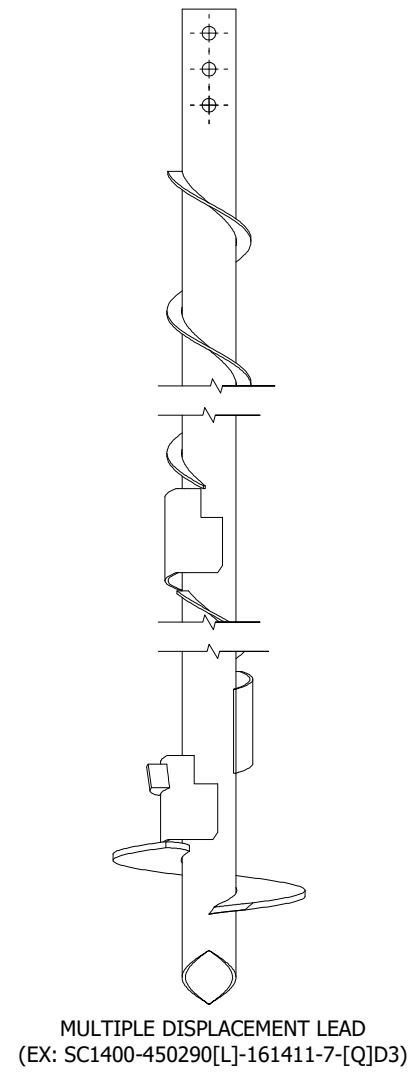
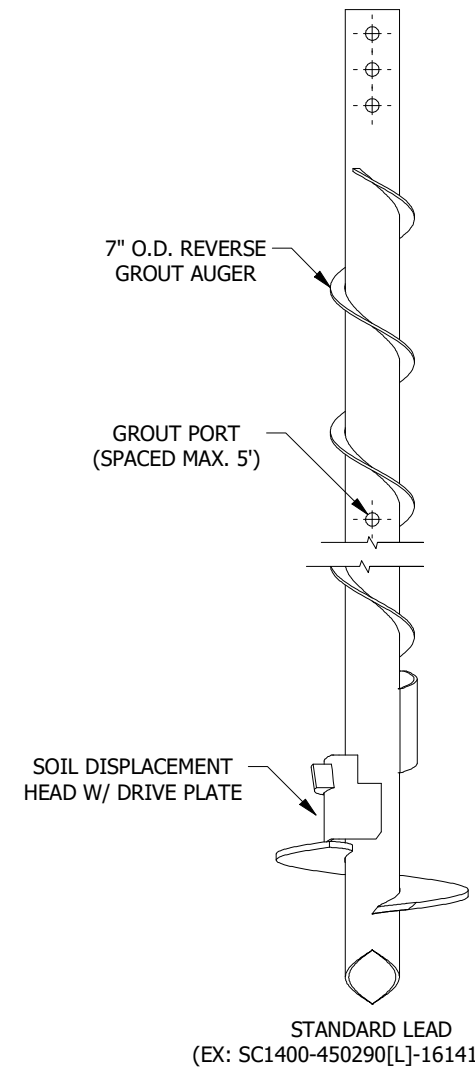
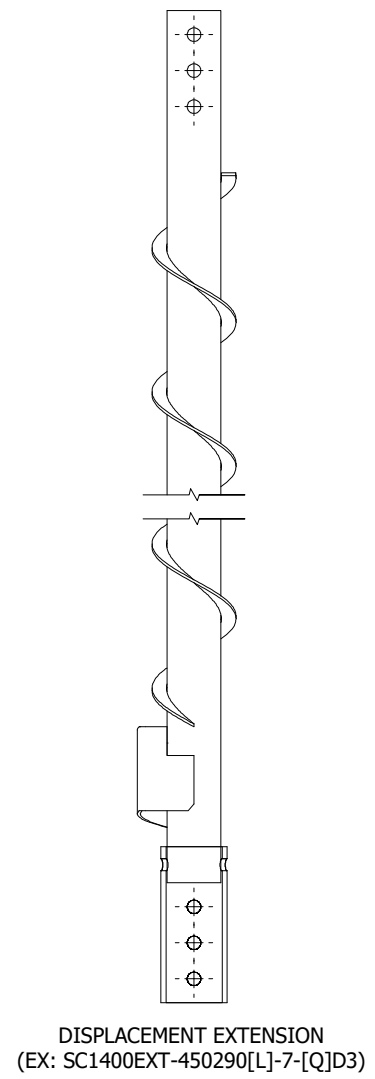
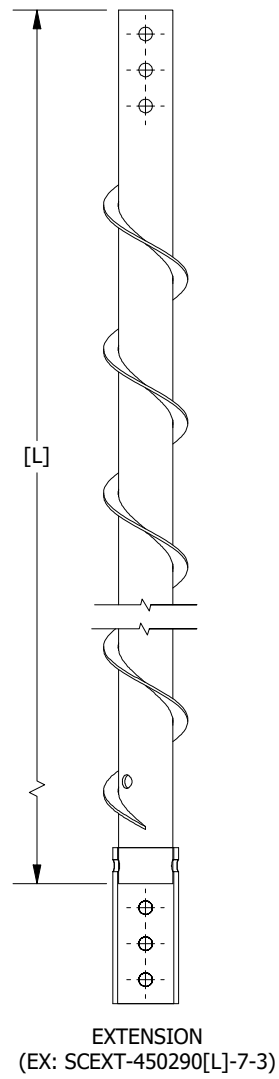


SC1400-450290-3 STELCOR LEADS AND EXTENSIONS

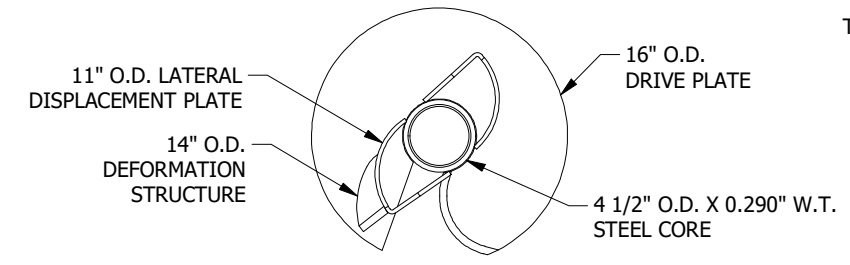
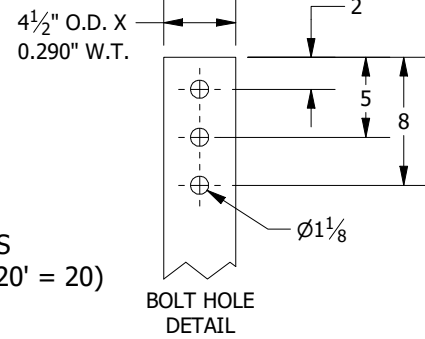


NOTES:

- DISPLACEMENT DRILLED, FULL LENGTH STEEL CORE WITH SOLID GROUT FILL AND UNCASSED OUTER GROUT COLUMN.
- GROUT COLUMN DEFORMATION SHALL HAVE A NOMINAL DIAMETER OF 14".
- STEEL CORE SHALL BE 4 1/2" O.D. X 0.290" W.T. 80 KSI MIN. YLD. AND SHALL HAVE DIRECT CONTACT (SHAFT-TO-SHAFT) AT EACH SPLICE.
- LATERAL DISPLACEMENT DRILL HEAD SHALL BE FABRICATED OF ASTM A572 GR. 50 PARTS. DRIVE PLATE & STINGER PLATE (IF REQUIRED) TO BE 1/2" THICK WITH A 6" PITCH.
- ALL WELDING TO BE PERFORMED BY SHOP QUALIFIED WELDORS TO AWS D1.1 STRUCTURAL WELDING CODE - STEEL.
- BARE STEEL.
- (3) 1" DIAMETER X 7" LONG PLAIN FINISH HEAVY HEX BOLT ASTM A325 AND (3) 1" PLAIN FINISH HEAVY HEX NUT ASTM A194 (GRADE 8).
- MAXIMUM TORQUE NOT TO EXCEED 33,500 FT*LBS.
- ONE OR MORE OF THE FOLLOWING PATENTS MAY APPLY: US 8,926,228 B2 & US 10,480,144 B2; OTHER PATENTS PENDING.

STELCOR PART # ABBREVIATIONS:

- SC = STELCOR
- 1400 = 14" NOMINAL GROUT DIAMETER
- EXT = EXTENSION
- 450 = 4 1/2" O.D. STEEL CORE
- 290 = .290" STEEL CORE WALL THICKNESS
- [L] = SHAFT LENGTH IN FEET (EXAMPLE: 20' = 20)
- 16 = 16" O.D. DRIVE PLATE
- 14 = 14" O.D. DEFORMATION STRUCTURE
- 11 = 11" O.D. DISPLACEMENT PLATE
- 7 = 7" O.D. REVERSE GROUT AUGER
- [Q] = DISPLACEMENT PLATE QUANTITY
- D = ADDITIONAL 11" O.D. DISPLACEMENT PLATE
- S = STINGER PLATE
- 14 = 14" O.D. STINGER PLATE DIAMETER



DRAWN RMS	12/29/2023
CHECKED DSS	1/3/2024
IDEAL MANUFACTURING, INC. 999 PICTURE PARKWAY WEBSTER, NY 14580 800-789-4810 WWW.IDL-GRP.COM	



PROPRIETARY AND CONFIDENTIAL
THE INFORMATION CONTAINED IN THIS DRAWING IS THE SOLE PROPERTY OF IDEAL MANUFACTURING, INC. ANY REPRODUCTION IN PART OR AS A WHOLE WITHOUT WRITTEN PERMISSION OF IDEAL MANUFACTURING, INC. IS PROHIBITED.

NOT TO SCALE ALL UNITS IN INCHES U.N.O.	SIZE B	DWG NO SC1400-450290-3	REV 0	SHEET 1 OF 1
--	--------	---------------------------	-------	--------------