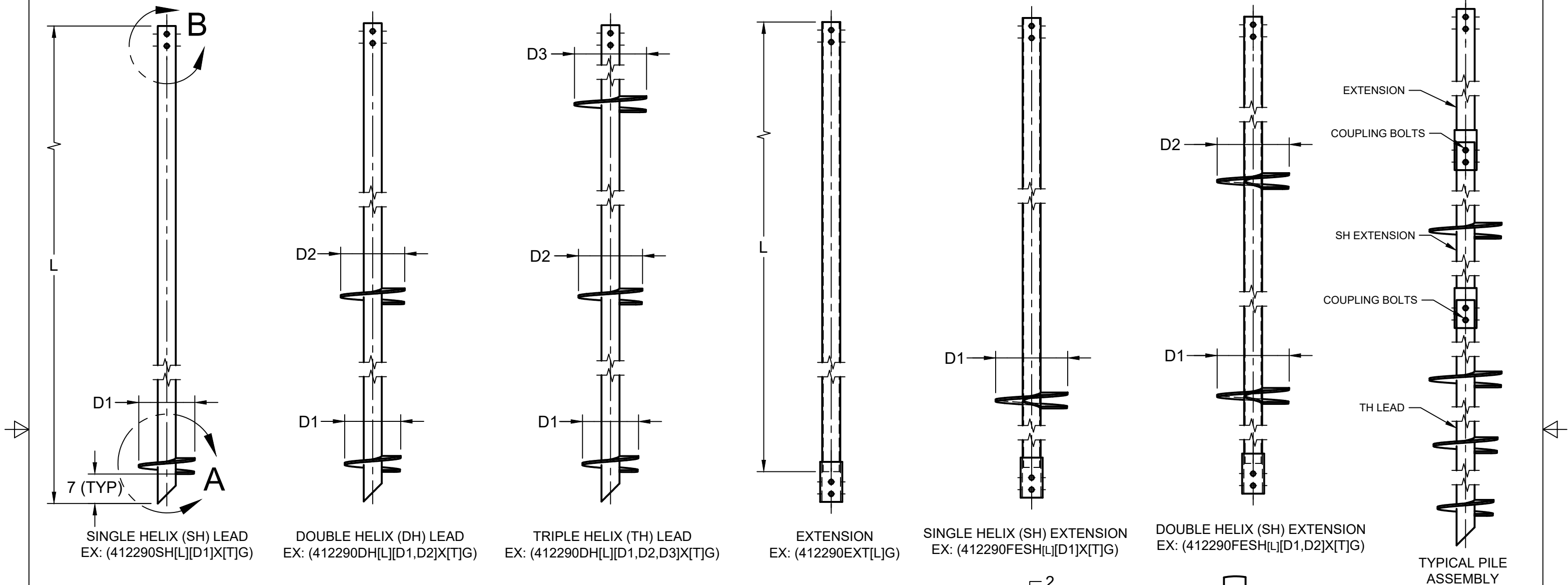


MAXIMUM TORQUE NOT TO EXCEED 26,500 FT-LBS

ULTIMATE CAPACITY OF 159 KIPS BASED ON CAPACITY TO
TORQUE RATIO OF $K_t = 6 \text{ FT}^{-1}$



NOTES:

- PILE SHAFT TO MEET OR EXCEED 80 KSI
- PLATE STEEL TO MEET OR EXCEED REQUIREMENTS OF CSA G40.21-13 GRADES 44W/50W AND ASTM A36-19
- ALL HELICES ARE FORMED BY PRESS DIE
- HELIX SPACING IS EQUAL TO (3) TIMES THE DIAMETER OF THE LOWER HELIX
- STANDARD HELIX DIAMETERS INCLUDE 14", 16", 18", & 20". 1/2" THICKNESS.
- ALL WELDING TO BE PERFORMED BY CERTIFIED WELDER IN ACCORDANCE WITH CWB W59-18
- HOT DIP GALVANIZING AS PER CAN/CSA G 164 or ASTM 123
- (2) 1" DIAMETER X 7" LONG HEAVY HEX BOLTS AND 1" HEAVY HEX NUT

NORTEK SKU # ABBREVIATIONS

412 = SHAFT DIAMETER
290 = SHAFT WALL THICKNESS
L = SHAFT LENGTH IN FT
EXT = EXTENSION
FE = FLIGHTED EXTENSION
D = DIAMETER OF HELIX (EX. 12" = 12)
SH = SINGLE HELIX
DH = DOUBLE HELIX
TH = TRIPLE HELIX
X = SEPARATES HELIX DIAMETERS AND THICKNESSES
[T] = HELIX THICKNESS
G = GALVANIZED



4.5" x 0.290" W.T HELICAL LEADS & EXTENSIONS				
			PROPRIETARY AND CONFIDENTIAL THE INFORMATION CONTAINED IN THIS DRAWING IS THE SOLE PROPERTY OF NORTEK HELICAL PILES. ANY REPRODUCTION IN PART OR AS A WHOLE WITHOUT WRITTEN PERMISSION OF NORTEK HELICAL PILES IS PROHIBITED.	
APPROVED	K.D	2024-02-02	NORTEK HELICAL PILES 1098 INDUSTRIAL RD AYR, ON N0B 1E0 519-623-3858 WWW.NORTEKHELICALPILES.CA	SHEET 1 OF 1
CHECKED	C.D	2024-02-01		UNITS IN INCHES U.N.O
DRAWN	K.D	2024-01-15		REV 01
DWG NO	1			